



**GETTING TO
90%**

High school graduation rates have improved considerably over the last 10 years. In Ontario we now have an 83% grad rate up from 68% in 2004. The UCDSB has achieved a similar increase.

The province has a target of an 85% grad rate. The UCDSB has a target of a 90% grad rate.

Not going to get there unless we make some changes.

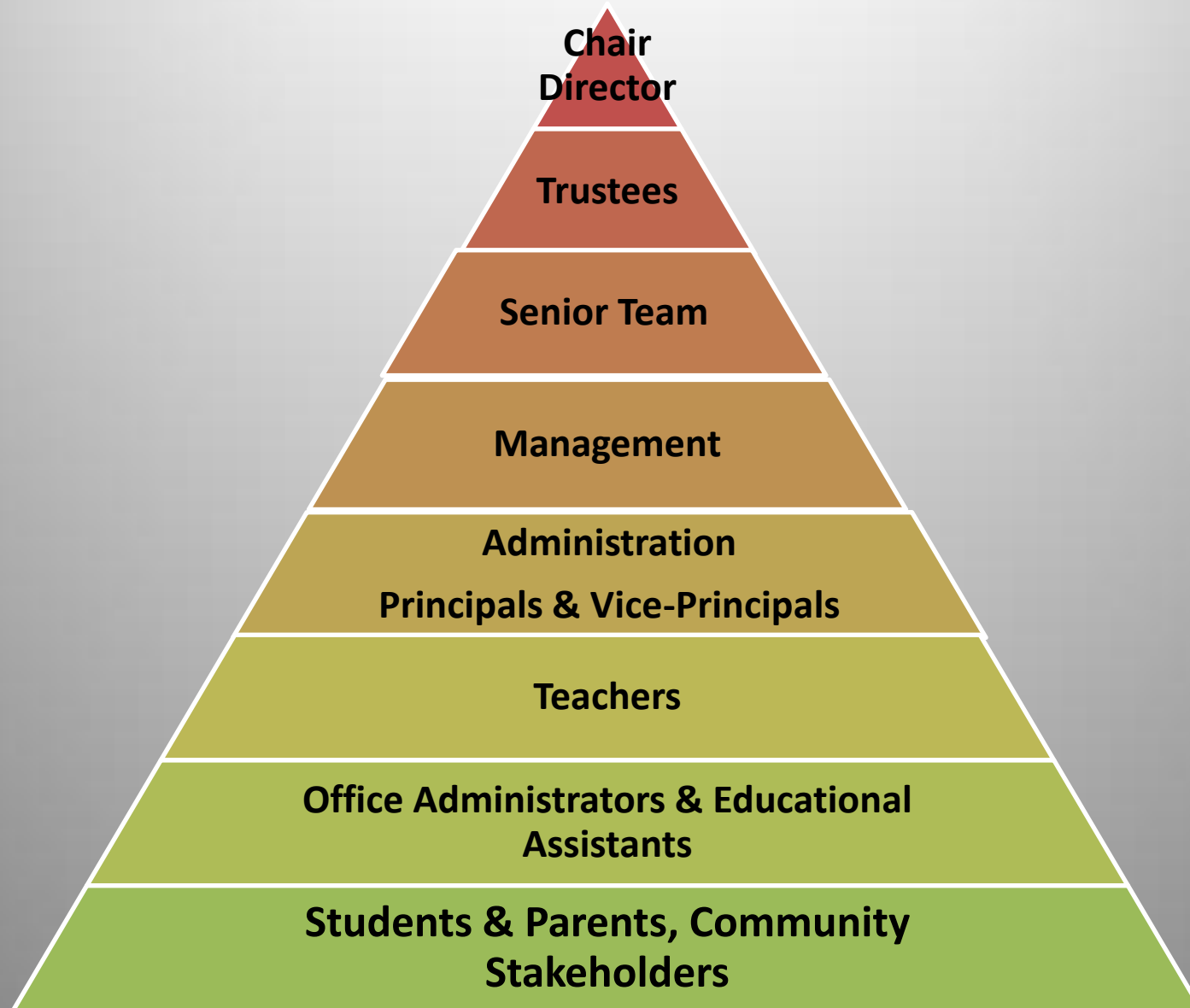
PARADIGM SHIFT



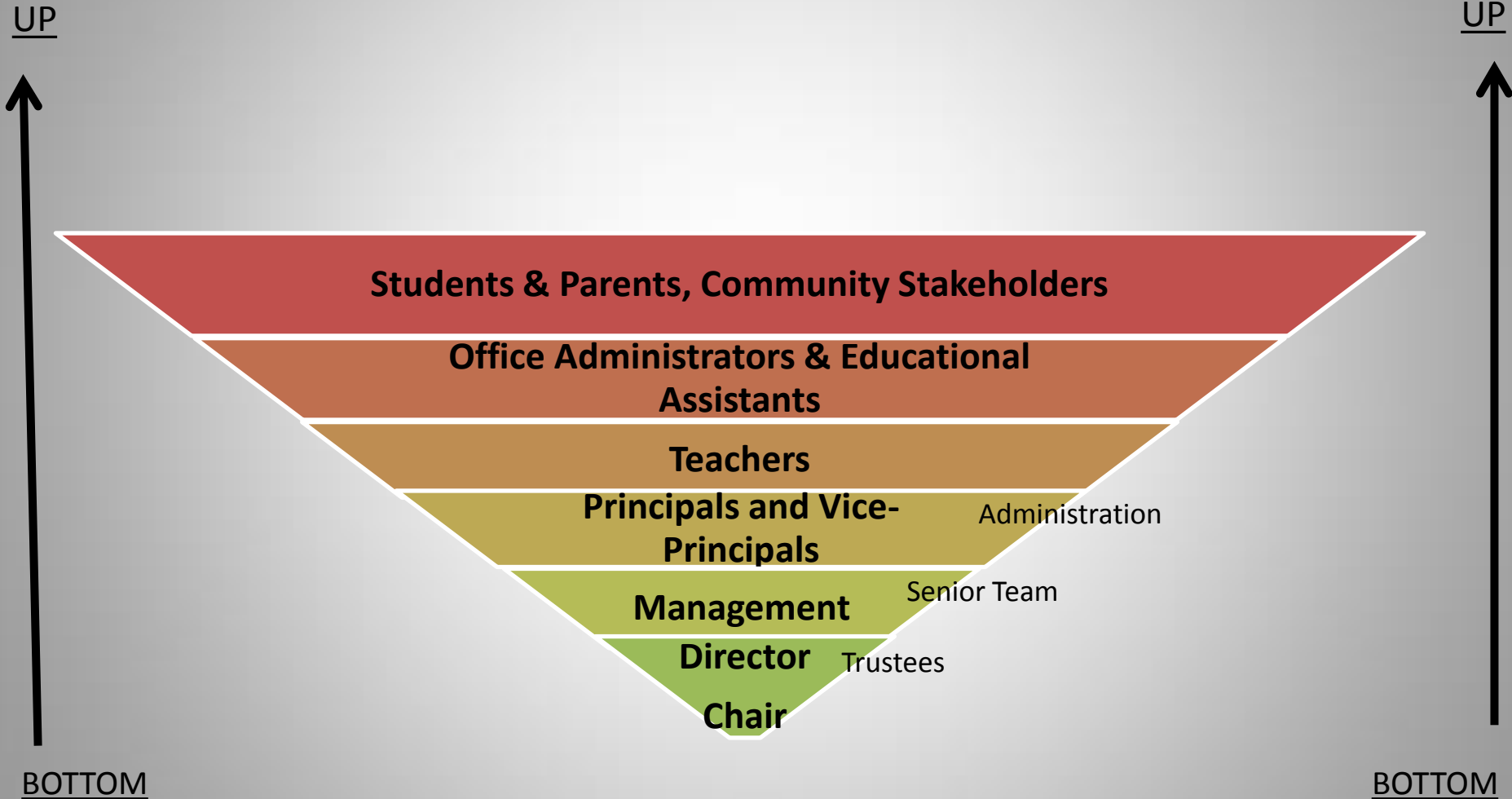
THE
CHANGE

FLATTER LESS BUREAUCRATIC
SERVICE DRIVEN

Typical Educational Hierarchy Model



NEW Educational Hierarchy Model



SERVE, INSPIRE, INNOVATE

“Focus the change at the level it matters most. The School House.”

Chair Pietersma
Charlotte Patterson
February 2014

U.C.D.S.B. Class of 2013



FEBRUARY 5, 2013

Keeping the Main Thing the Main Thing

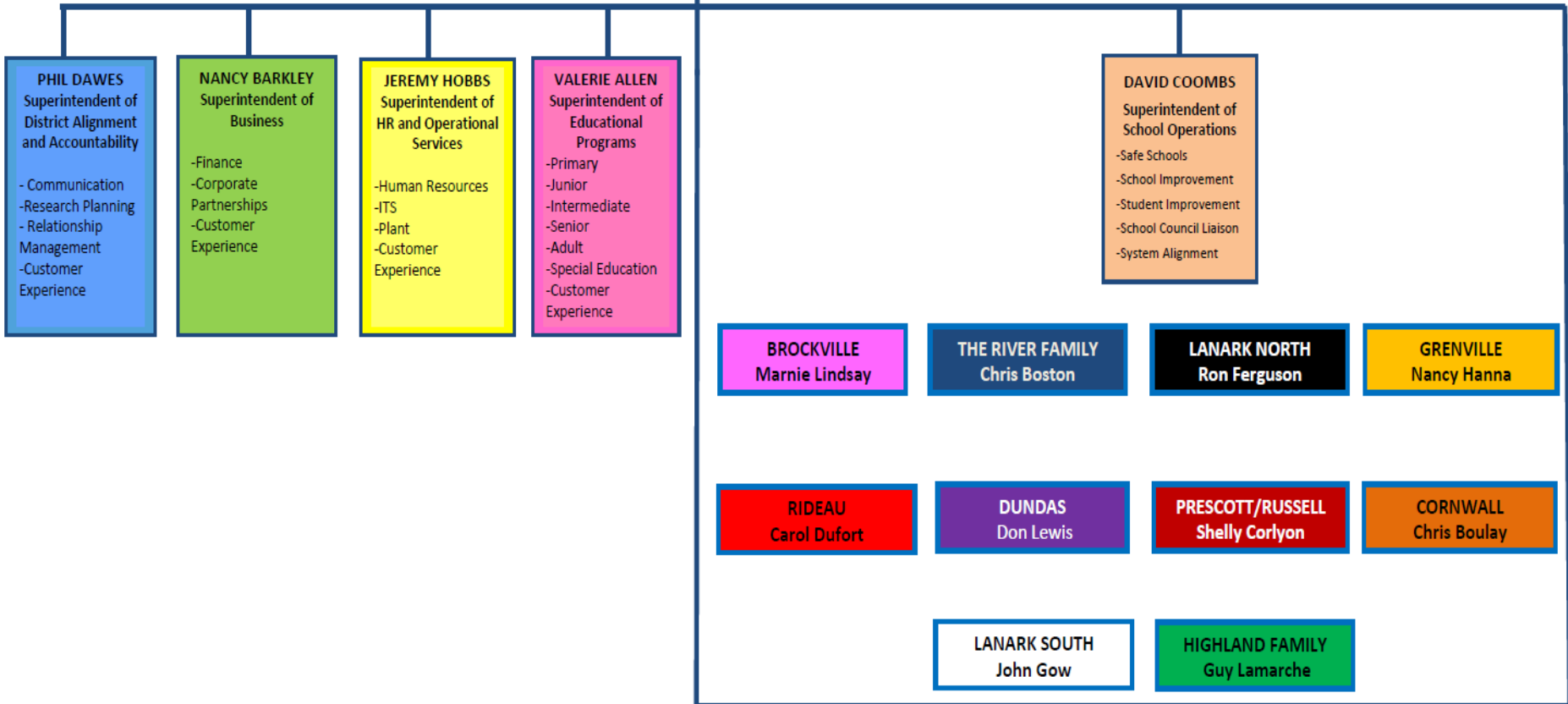
Strategic Leadership for District

DAVID K. THOMAS CEO/Director Strategic Planning Student Improvement Leadership Development	IAN CARSWELL Associate Director System & School Success Leadership Development
---	--

*From systems of control
To systems of engagement*

Services Leadership

Field Leadership



Dundas Family

Chesterville P.S.
Iroquois P.S.
Morrisburg P.S.
Nationview P.S.
North Dundas D.H.S.
Seaway D.H.S.
Winchester P.S.

Brockville Family

Brockville Collegiate Inst.
Commonwealth P.S.
Lyn P.S. Maynard P.S.
Prince of Wales P.S.
Thousand Islands S.S.
Toniata P.S. T. R. Leger
Vanier P.S. Westminster P.S.

The River Family

Athens D.H.S.
Front of Yonge E.S.
Gananoque S.S.
Linklater P.S.
Meadowview P.S.
Pineview P.S.
Thousand Islands E.S.

Prescott/Russell Family

Cambridge P.S.
Plantagenet P.S.
Pleasant Corners P.S.
Rockland D.H.S.
Rockland P.S.
Russell H.S.
Russell P.S.
Vankleek Hill C.I.

Cornwall Family

Central P.S.
Child and Family Treatment
Centre
Cornwall Collegiate V.S.
Eamer's Corners P.S.
East Front P.S.
Cornwall Education Centre
Gladstone P.S. St. Lawrence S.S.
Turtle Island
Viscount Alexander P.S.

Lanark South Family

Drummond Central School
Glen Tay P.S.
Maple Grove E.S.
North Elmsley E.S.
Perth & District C.I.
Queen Elizabeth E.S.
The Stewart School

Highland Family

Char-Lan D.H.S.
Glengarry D.H.S.
Laggan P.S. Longue Sault P.S.
Maxville P.S.
North Stormont P.S.
Rothwell-Osnabruck School
Roxmore P.S.
S.J. McLeod P.S. Tagwi S.S.
Willamstown P.S.

Lanark North Family

Almonte & District H.S.
Arklan Community P.S.
Beckwith P.S.
Caldwell Street P.S.
Carleton Place H.S.
Naismith Memorial P.S.
Pakenham P.S.
R. Tait McKenzie P.S.

Rideau/Smiths Falls Family

Chimo E.S.
Duncan J. Schoular P.S.
Frankville Office
Lombardy P.S. Montague P.S.
Rideau Centennial P.S.
Rideau D.H.S. Rideau Vista P.S.
Smiths Falls D.C.I.
South Crosby P.S.
Sweet's Corners E. S.

Grenville Family

Benson P.S. Centennial '67 P.S.
Kemptonville P.S. Merrickville P.S.
International Education
North Grenville D.H.S.
Oxford Office
Oxford-On-Rideau P.S.
South Branch E.S.
South Edwardsburg P.S.
South Grenville D.H.S.
Wellington E.S. Wolford P.S.

Families of Schools

Public education must be a common platform for building capacity in our communities and democracies.

Jesse Hirsh
CBC